



SAPAP1 Monoclonal Antibody

Catalog No	YP-Ab-12616
Isotype	IgG
Reactivity	Human
Applications	WB;IHC;IF;ELISA
Gene Name	DLGAP1
Protein Name	Disks large-associated protein 1
Immunogen	Purified recombinant fragment of human SAPAP1 expressed in E. Coli.
Specificity	SAPAP1 Monoclonal Antibody detects endogenous levels of SAPAP1 protein.
Formulation	Ascitic fluid containing 0.03% sodium azide,0.5% BSA, 50%glycerol.
Source	Monoclonal, Mouse
Purification	Affinity purification
Dilution	Western Blot: 1/500 - 1/2000. Immunohistochemistry: 1/200 - 1/1000. Immunofluorescence: 1/200 - 1/1000. ELISA: 1/10000. Not yet tested in other applications.
Concentration	1 mg/ml
Purity	≥90%
Storage Stability	-20°C/1 year
Synonyms	DLGAP1; DAP1; GKAP; Disks large-associated protein 1; DAP-1; Guanylate kinase-associated protein; hGKAP; PSD-95/SAP90-binding protein 1; SAP90/PSD-95-associated protein 1; SAPAP1
Observed Band	
Cell Pathway	Cell membrane ; Peripheral membrane protein . Cell junction, synapse, postsynaptic density . Cell junction, synapse .
Tissue Specificity	Expressed in brain.
Function	function:Part of the postsynaptic scaffold in neuronal cells.,similarity:Belongs to the SAPAP family.,subcellular location:Found in postsynaptic density of neuronal cells.,subunit:Interacts with guanylate kinase-like domain of DLG1, DLG2, DLG3, DLG4 and AIP1. Interacts with the PDZ domain of SHANK1, SHANK2 and SHANK3. Found in a complex with DLG4 and SHANK1, SHANK2 or SHANK3. Found in a complex with DLG4 and BEGAIN. Interacts with DYL2 and LRFN1.,tissue specificity:Expressed in brain.,
Background	function:Part of the postsynaptic scaffold in neuronal cells.,similarity:Belongs to the SAPAP family.,subcellular location:Found in postsynaptic density of neuronal cells.,subunit:Interacts with guanylate kinase-like domain of DLG1, DLG2, DLG3, DLG4 and AIP1. Interacts with the PDZ domain of SHANK1, SHANK2 and SHANK3. Found in a complex with DLG4 and SHANK1, SHANK2 or SHANK3.



Found in a complex with DLG4 and BEGAIN. Interacts with DYL2 and LRFN1.,tissue specificity:Expressed in brain.,

matters needing attention

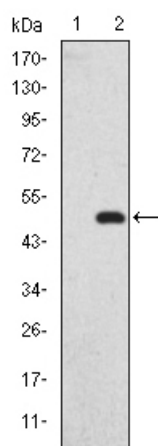
Avoid repeated freezing and thawing!

Usage suggestions

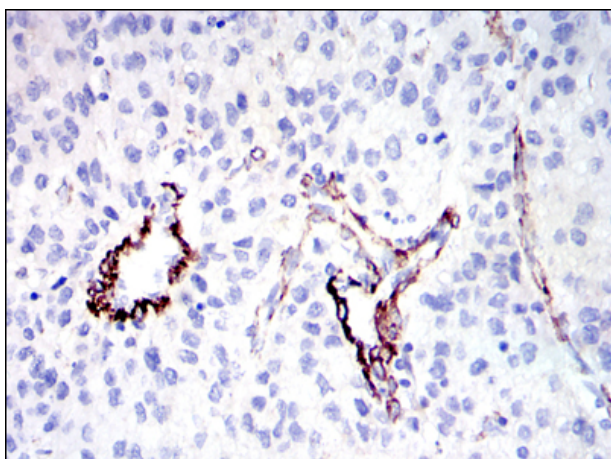
This product can be used in immunological reaction related experiments. For more information, please consult technical personnel.



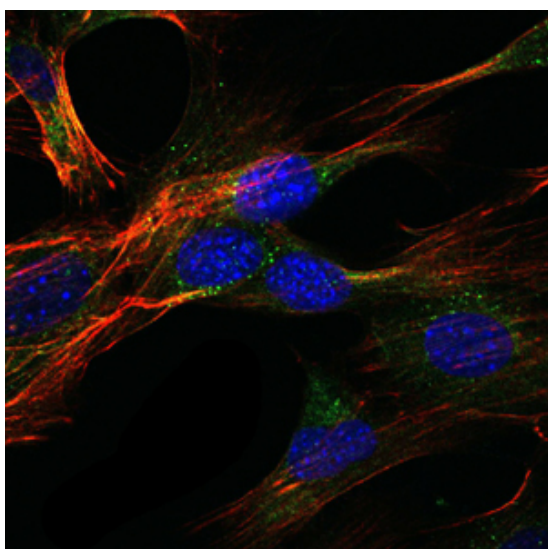
Products Images



Western Blot analysis using SAPAP1 Monoclonal Antibody against HEK293 (1) and GKAP-hlgGfc transfected HEK293 (2) cell lysate.



Immunohistochemistry analysis of paraffin-embedded human liver cancer tissues with DAB staining using SAPAP1 Monoclonal Antibody.



Immunofluorescence analysis of NIH/3T3 cells using SAPAP1 Monoclonal Antibody (green). Blue: DRAQ5 fluorescent DNA dye. Red: Actin filaments have been labeled with Alexa Fluor-555 phalloidin.

